

Pretty in Pink Bunny

Approximately 19 inches tall

Supply List

- Material:** Tea-dyed muslin
Regular muslin for bows, bloomers, and whiskers
Two pink contrasting materials for Bodice and Skirt
Lace - 44 inches of 4-1/2 inch wide antique or off white lace
Embroidery Floss:
Rose - #600
Brown - #433
Pink - to match bodice
Natural - to match regular muslin
Warm'n'Natural batting
Doll Needle - 3 or 5 inches long
Embroidery needle
Paint - Black, antique white, & Folkart Barnyard Red acrylic paint
Stuffing
Small paint brush for eyes
Large stencil brush for cheeks
Card stock
Mechanical Pencil/disappearing fabric pen
Small safety pin
Basic Sewing Supplies

Lillie Mae's Crafts

Primitive, Country, and Whimsical Craft Patterns

Brenda Greenwalt

Muncie, IN * 47304

www.lilliemaeecrafts.com

e-mail - lilliemaeecrafts@lilliemaeecrafts.com

Copyright © 2008 Brenda Greenwalt of Lillie Mae's Crafts

Pretty in Pink Bunny Tutorial



Lillie Mae's Crafts

"Charming & Winsome Annie Rag Doll Patterns"



Lillie Mae's Crafts

A Lillie Mae's Crafts original design by Brenda Greenwalt

Pretty in Pink Bunny

Read through all directions before beginning.

For illustrations of the different steps and techniques as well as the stitches visit my "Stitch 'n' Stuff" page on my website at <http://www.lilliemaescrafts.com>

Instructions:

19 inches tall

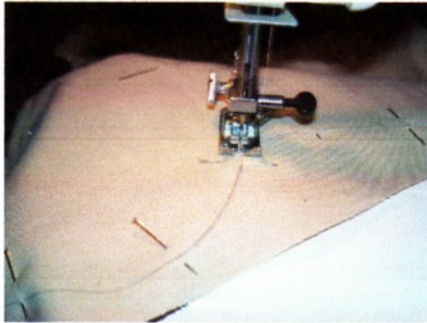
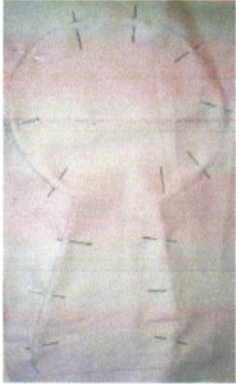
Body:

1. Print out the doll patterns on card stock. Place them on doubled muslin and trace around the pattern pieces either with a pencil or disappearing fabric pen; don't forget to trace around 2 arms and 2 legs. Pin.

2. Machine stitch directly on the lines you just traced being sure to leave open where indicated on patterns.

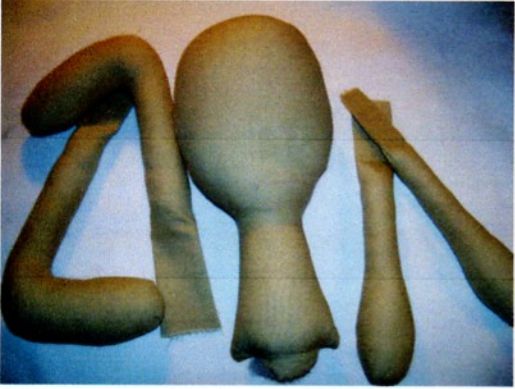
3. Cut out your pattern pieces about 1/4 inch away from your sewn lines. I use pinking shears for this as it softens the edges and helps ease the pieces into a tight area such as the neck; remove all the bulk that can hamper a good, smooth curve.

4. Clip curves and turn.





5. After turning, your next step is stuffing. This is when you will really begin to see the shape of your Annie taking form. I've heard doll makers use many different "tools" to help them with stuffing such as screwdrivers, shish kabob skewers, etc. My personal favorite tool is a paintbrush handle; I'll use several different sizes. The very small handles I use for the hands and thumb and any other small narrow parts. For the larger body area, I use a handle from one of my brushes that actually fell off. On one end it is completely flat and this helps with "packing." As I said, I usually stuff my dolls very firmly. Here I am stuffing with, of course, one of my paintbrush handles.



6. To keep the "rag doll" effect of a primitive doll, I will stop stuffing about 2 inches from the top of the legs and arms. .



7. Our next step is to sew the openings, left for turning, closed. On the arms and legs, I will machine stitch the closings.



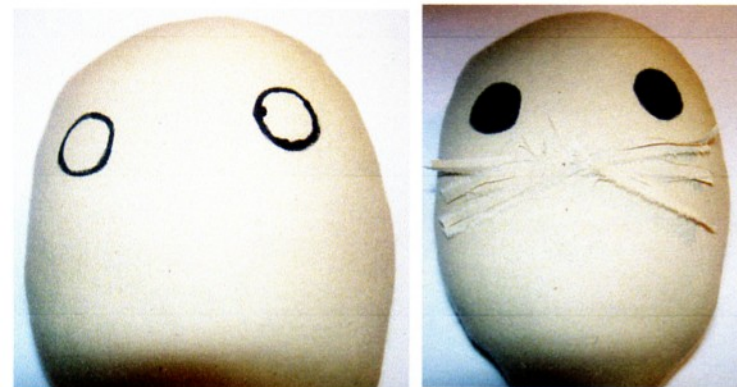
8. The head and body section, however, has to be hand stitched closed.



9. I will usually sew the arms on approximately 1/2 inch from the head. Just line them up evenly on the body. Sew the legs on with a simple whipstitch with the toes pointing away from each other (see picture of finished doll).

Face:

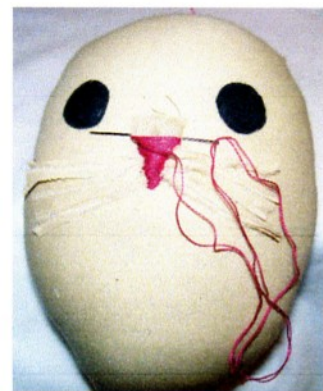
1. Print out facial features and pin to appropriate place. Trace with mechanical pencil. With small paint brush, outline eyes first and then fill in.



2. **Whiskers:** Tear from muslin 6 small strips $\frac{1}{4}$ inch wide x 2 inches long. Press. Thread doll needle with natural colored thread. Place whiskers where shown on pattern. Go in through very top of head (this will be covered with ears) sew on whiskers. After they are firmly sewn on and attached, very carefully with scissors cut each whisker in half length-wise.



3. **Nose:** Print out nose pattern, place on single layer muslin and cut out one. With fabric glue, glue to appropriate place on face being sure to cover where whiskers have been sewn on. Allow to completely dry.



4. Thread your doll needle with double strand of rose embroidery floss and, using the same method as for whiskers, go in from top of head and down to bottom of nose. Unthread your doll needle and rethread floss on small embroidery needle. Embroidery the nose, going from outside of the muslin nose pattern just glued on, using satin stitch technique.



6. **Eyebrows & Mouth:** Thread one strand of brown embroidery floss on doll needle and, using same technique as above, go down to beginning of nose and using one straight stitch for each 3 stitches, stitch mouth. Go up to eyebrows and with one stitch each stitch them. Go back out through top of head and tie off and knot.

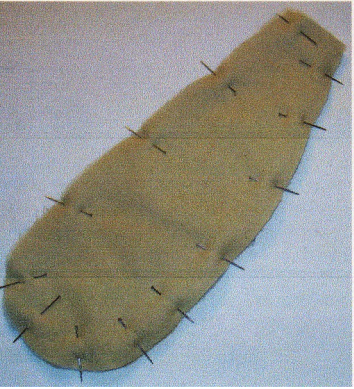


Ears:

1. Print out ear pattern on card stock.
2. Trace 2 ear patterns on doubled muslin.



3. Trace 2 ear patterns on single layer w natural.



4. Sandwich warm n natural ear pattern between muslin ear cut outs and pin

