

# Flower

Approx 20"

## Supply List

- Material: Unbleached muslin or tea-dyed muslin  
Material for dress, hair bow, and flower  
Bloomers - may be made to match dress or from muslin  
Hair - Any fuzzy red yarn  
Embroidery Thread: Brown #5471, red #347, thread that matches dress, off white or natural  
Paint - Black & white acrylic paint  
Folkart Acrylic Paint - Country Red (cheeks & legs)  
5 inch doll needle  
Stuffing  
Decorative buttons (3) for front of dress & both sides of flower  
Mechanical Pencil  
Sandpaper  
For Staining - instant coffee, vanilla extract, fragrance oil.  
Sponge brush & Stencil Brush  
Paper towels and paper plates  
Cardstock (for tag)  
Small safety pin  
Wooden green flower stem  
Optional - old cookie sheet, glass jar with lid, wax paper, pliers, long beading needle (see #1 of face instructions)

## Suggested shopping for fragrance oils -

- The Chemistry Store - <http://www.chemistrystore.com>  
From Nature With Love - <http://www.fromnaturewithlove.com>  
Save on Scents - <http://www.saveonscents.com>  
Bramble Berry - <http://www.brambleberry.com>  
To Die for Soap - <http://www.todieforssoap.com>

## Lillie Mae's Crafts

Primitive, Country, and Whimsical Craft Patterns

Brenda Greenwalt  
6210 W. Taylor Rd.\* Muncie, IN \* 47304  
(765) 288-0611  
[www.lilliemascrafts.com](http://www.lilliemascrafts.com)

e-mail - [lilliemascrafts@lilliemascrafts.com](mailto:lilliemascrafts@lilliemascrafts.com)

Copyright © 2008 Brenda Greenwalt of Lillie Mae's Crafts



## Lillie Mae's Crafts

"Charming & Winsome Raggedy Annie Rag Doll Patterns"



## **A Lillie Mae's Crafts original design by Brenda Greenwalt**

### **Flower Doll Instructions**

**Read through all directions before beginning.**

**Body:** See standard instructions.

**Staining:** See standard instructions.

#### **Tag:**

Print out the tag on white cardstock. I've left it blank so you may write in whatever you would like to name your doll. Using the stain mixture given above, either spray (putting some mixture in a plastic spray bottle) or use your sponge brush, and coat entire tag. Bake at 200 degrees for 5 minutes. You

#### **Hair:**

Follow directions on hair cards #1 and #2 - on pattern pages. Beginning in top center of her head, hand sew one hair bundle from hair card #1 and then another bundle from hair card #1 on each side of that first bundle. Hand sew one hair bundle from hair card #2 on both sides of those. Push those strands of hair towards her face and sew a second row of hair behind the first row using the remaining 4 bundles of hair from hair card #2. If you want her hair thicker, simply make more hair bundles. Pull some of the shorter strands forward for her bangs. Arrange hair and trim.

#### **Flower and Leaf:**

#1. Flower: Print out flower pattern and trace, using mechanical pencil, on doubled material. Sew on traced lines leaving open where indicated. Clip curves and turn.

#2. Stuff firmly. DO NOT SEW OPENING CLOSED.

#3. Using your 3-inch doll needle go in from opening and sew buttons on either side of flower, pulling thread firmly and tightly. DO NOT SEW OPENING CLOSED.

#4. Stem: Cut wooden green flower stem to 7-1/2 inches. Place some hot glue in opening of Flower and shove stem in as far as you can, hold to secure and sew opening closed.

#5. Leaf: Print out leaf pattern and trace, using mechanical pencil, on doubled material - twice so you have 4 layers of leaf.

#6. Cut out and taking your fingernails, run along edges of each leaf, all round, to make them raggedly.

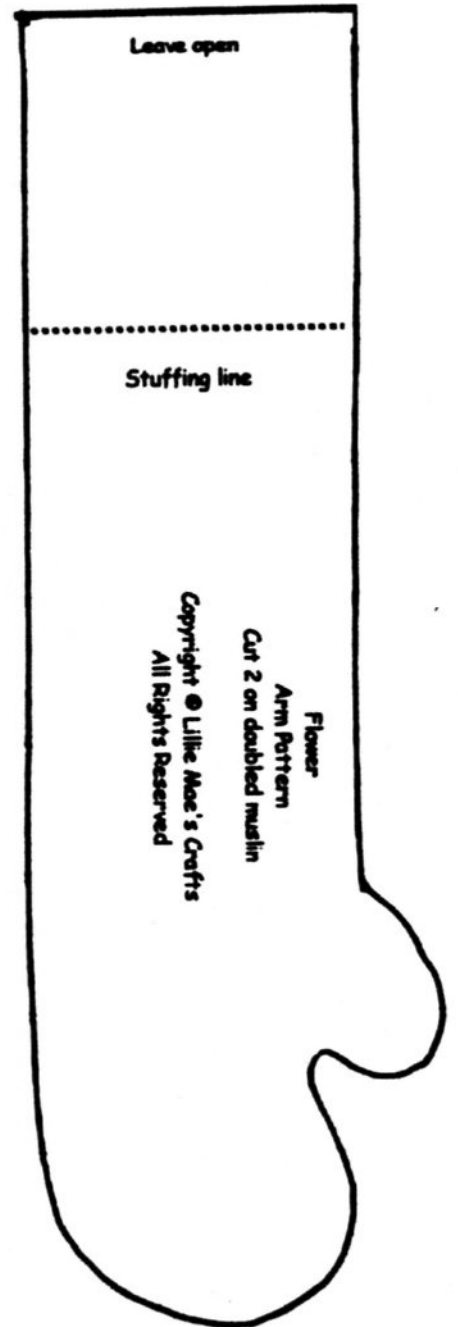
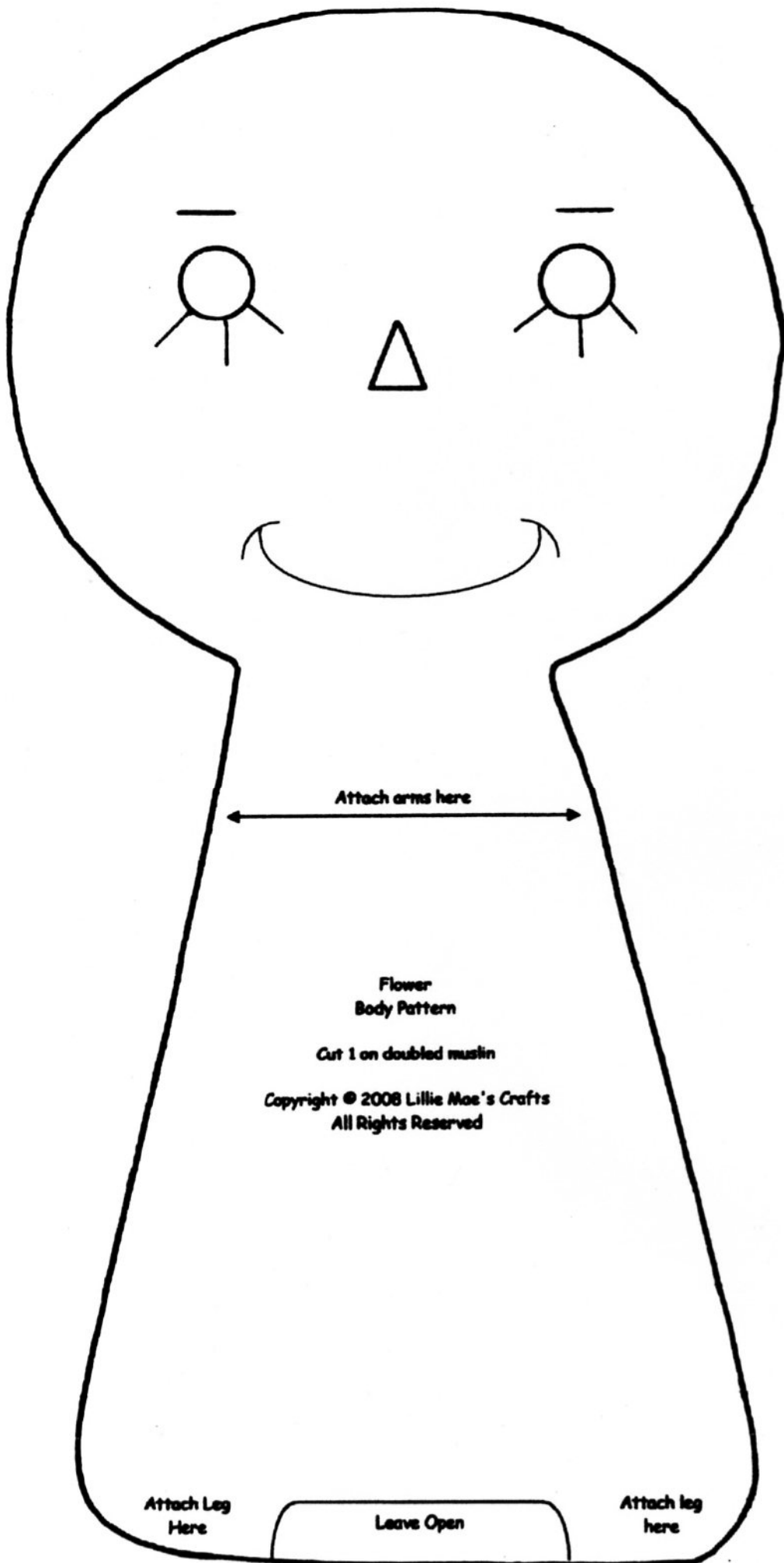
#7. Layering the 4 leafs one on top of the other, tie them around flower stem (see picture).

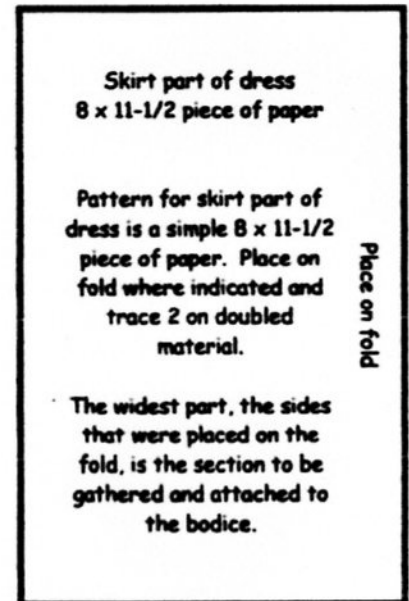
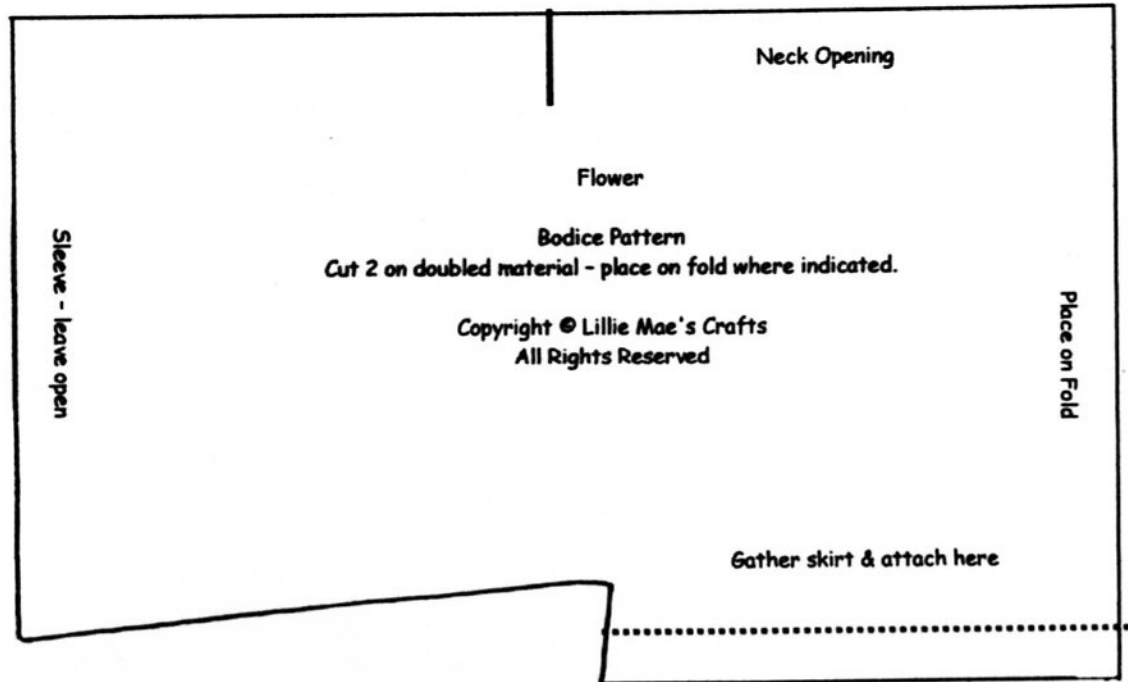
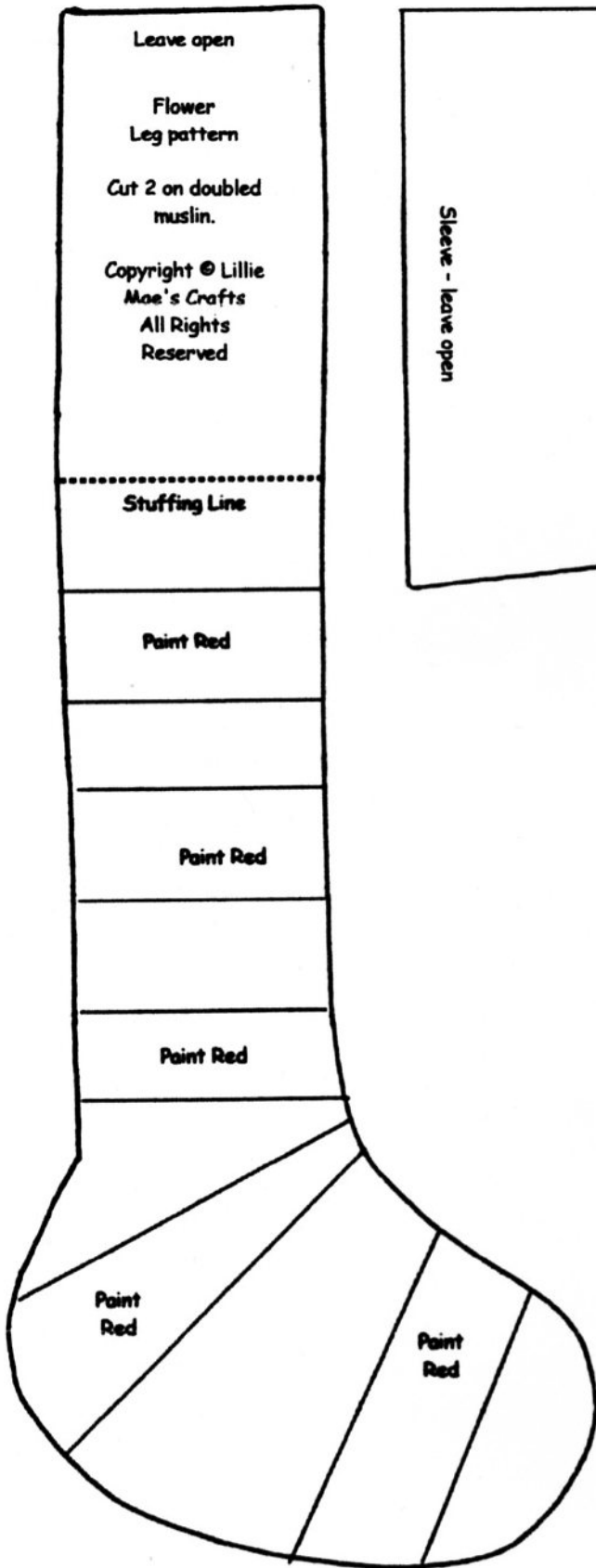
**You're done with Flower. I hope you enjoyed making her as much as I enjoyed designing her. If you have any problems or questions at all, please don't hesitate to email me.**

#### **Terms of Use:**

I DO NOT offer refunds on my craft patterns. Once you have received your pattern, the sale is complete.

All of my craft patterns are copyrighted. You may create a reasonable amount of items from my patterns for craft fairs, bazaars, craft malls, and auctions as long as you give Lillie Mae's Crafts credit for the design. You MAY NOT mass produce items from my patterns. Copying for any reason at all is strictly prohibited. You DO NOT have permission to alter them in any way. No wholesaling of items made from my patterns. My patterns are not to be shared or redistributed in any form without my express permission. If you have any questions, please ask before you purchase. Feel free to e-mail me at [lilliemascrafts@lilliemascrafts.com](mailto:lilliemascrafts@lilliemascrafts.com)



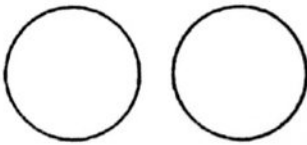


### Facial Features

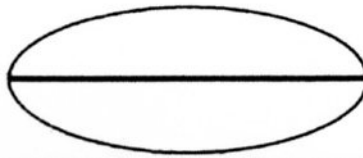
**Eyes and Nose:** Print and cut out pattern below. Position on face where desired (see picture and head pattern) and attach to doll's head with straight pins. Be sure the eyes are even. Trace lightly around eyes and nose patterns with pencil. See instructions to finish these.

**Mouth:** Print and cut out mouth pattern on cardstock. Position on face where desired (see picture and head pattern). It is the bottom part of the mouth pattern that you will be tracing onto the doll's head so be sure this is centered on the head and exactly where you want it. Attach to doll's head with straight pins. Lightly trace around the bottom part of the mouth pattern going up sides and ending at the point where the bold line in the center of the mouth pattern is. To get the "dimples" on sides of mouth, line up the sides of the mouth pattern where you would like the dimples or curves of the mouth to go and lightly trace with pencil. See instructions to finish the mouth.

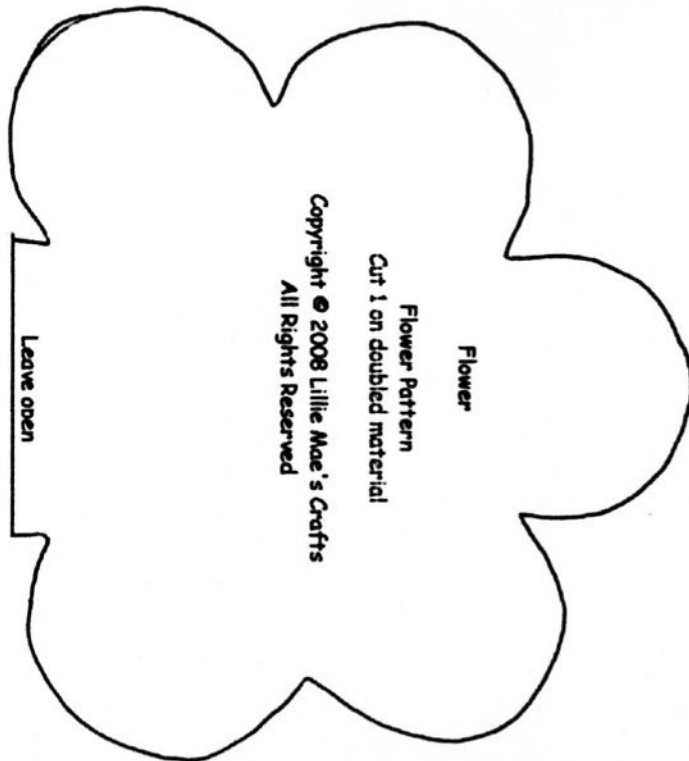
Eyes



Mouth



Nose



### Flower Doll

#### Hair Card #1

Print out 1 on cardstock.

#### Making a Hair Bundle:

Wrap yarn around hair card 10 times. Cut end & slip off card. Tie together with a matching piece of yarn.

Make 3 of these hair bundles.

Flower Doll

Hair Card #2

Print out 1 on cardstock.

Making a Hair Bundle:

Wrap yarn around hair card 10 times. Cut end & slip off card. Tie together with a matching piece of yarn.

Make 5 of these hair bundles.

Flower Doll

Hair Bow Pattern

Trace 1 on doubled material

Flower

Leaf patter - tear 4 strips on single layer dark green material

Copyright © 2008 Lillie Mae's Crafts - All Rights Reserved

Flower Doll

Hair Card #2

Print out 1 on cardstock.

Making a Hair Bundle:

Wrap yarn around hair card 10 times. Cut end & slip off card. Tie together with a matching piece of yarn.

Make 5 of these hair bundles.

Flower Doll

Hair Bow Pattern

Trace 1 on doubled material

Flower

Leaf patter - tear 4 strips on single layer dark green material

Copyright © 2008 Lillie Mae's Crafts - All Rights Reserved

Flower Doll

Pantaloons Pattern

On doubled unbleached muslin, trace 1.

Copyright 2008 Lillie Mae's Crafts  
All Rights Reserved

